



MD3 Series update instructions

To upgrade the MD3 firmware please follow these instructions:

1- Install GATE software and USB drivers on your PC by clicking on 20090220-GATE_setup.exe.



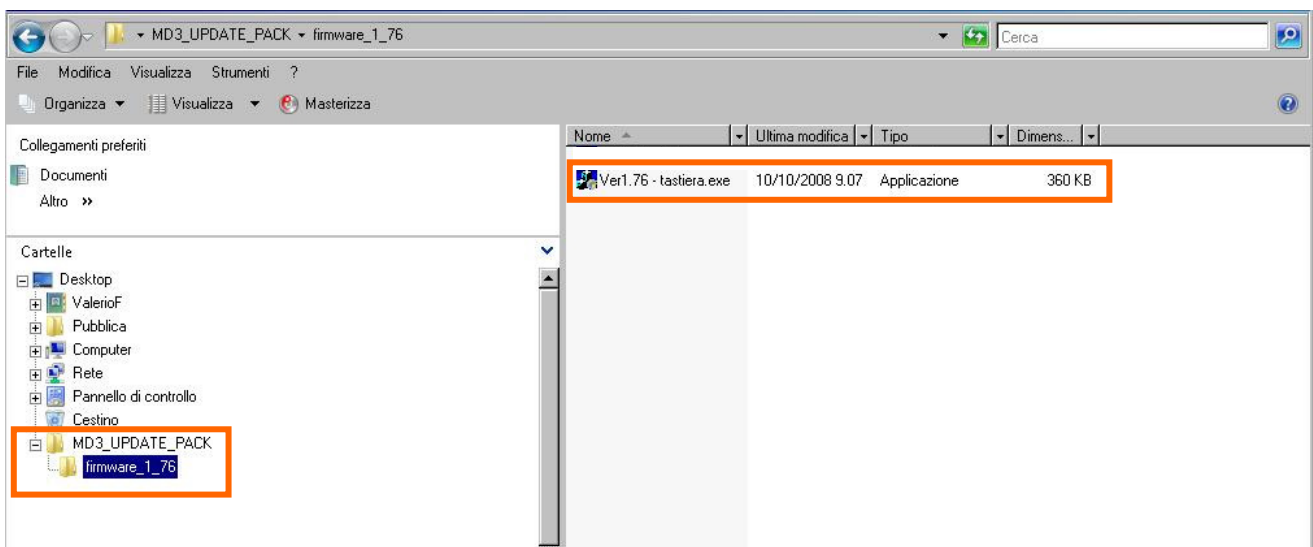
WARNING: The Windows operating system may try to block the ANT driver installation, therefore watch out for any windows (also reduced to icons in the Windows bar) that may block installation.

2- After installation close GATE if it is running !!!

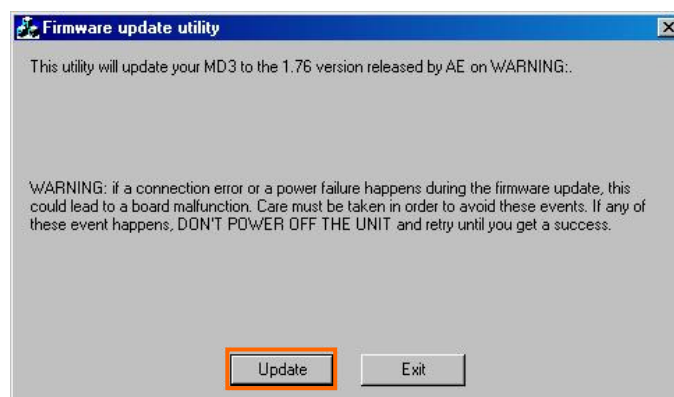
3- Connect your MD3 Series to the PC with the DTM-USB cable.

4- Turn on your MD3 Series.

5- Open this folder: MD3_UPDATE_PACK → FIRMWARE_1_76



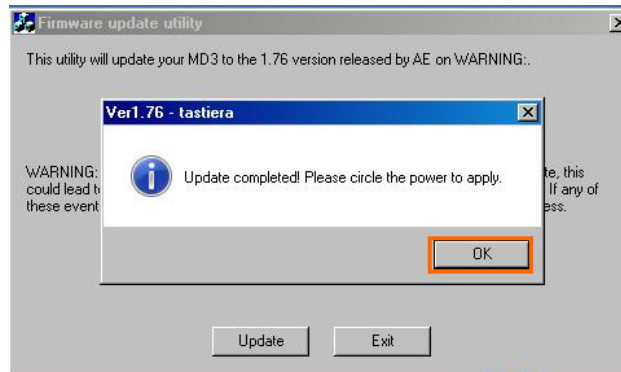
6- Start the firmware updater software by run “ver1.76_tastiera.exe”: click on update button to start the update process.



WARNING: don't switch off your MD3 Series or disconnect it from PC during the firmware update process



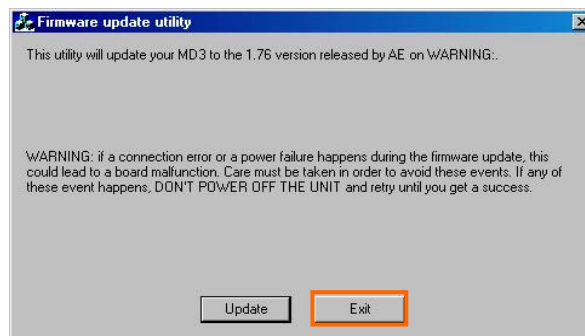
7- When the update process finished this window appears in your monitor:




8- Click on **OK** button and turn off your MD3 Series.

Warning: don't disconnect the USB cable!!

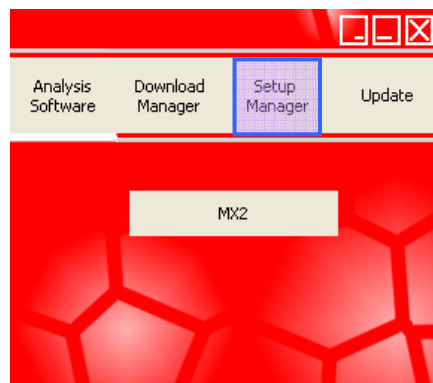
9- Close the firmware update utility by click on the **Exit** button.



10- Turn on your MD3 Series: if it displayed the message "INVALID SETUP" please ignore it.

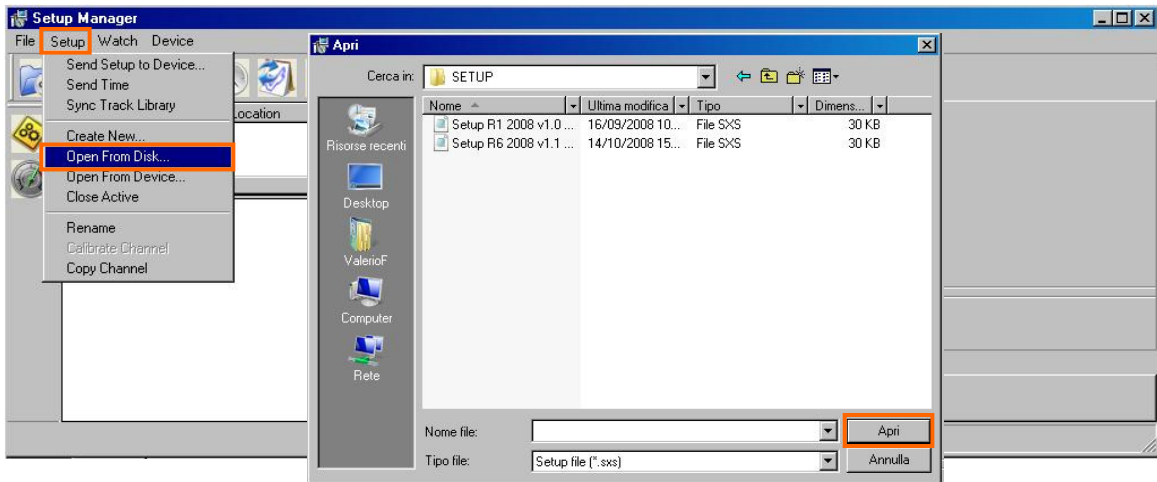
11- Start GATE by clicking on the program icon 

12- Open "Setup Manager" by pressing the button shown in figure below

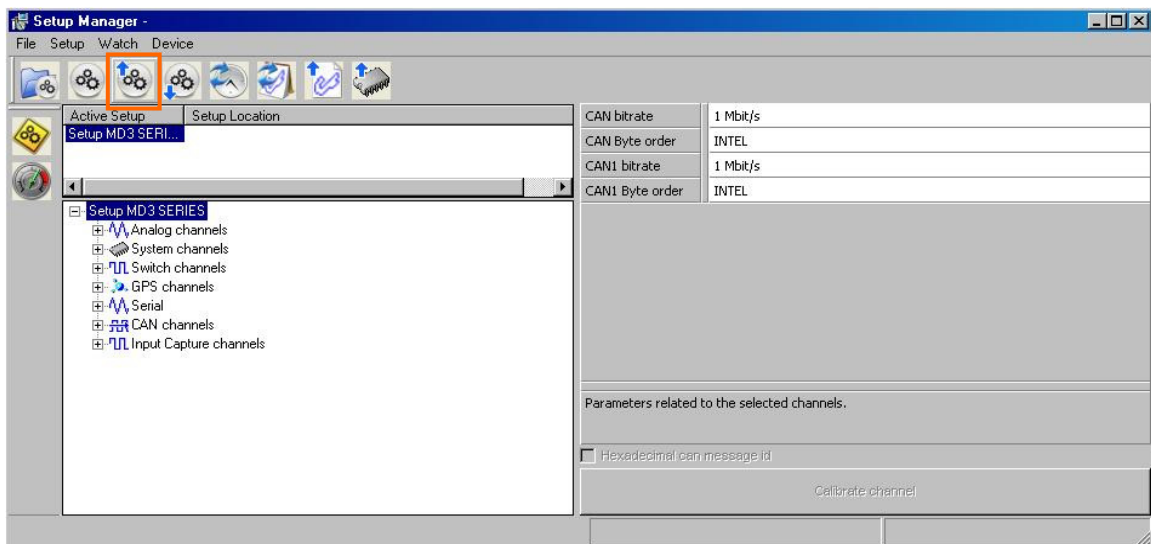




- 13- Load the setup file into “Setup Manager”: you must choice the properly file for your motorbike.
All the setup files are stored in SETUP folder into the MD3_UPDATE_PACK

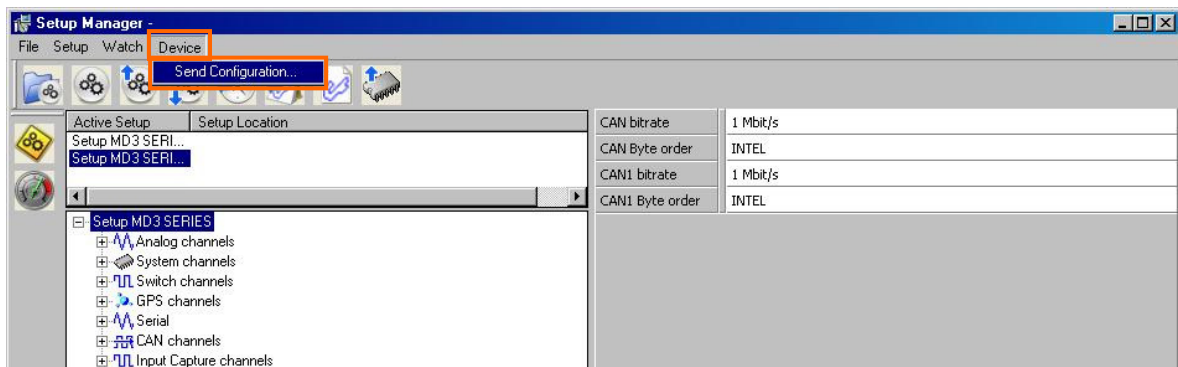


- 14- Send the file loaded in “Setup Manager” to your MD3 Series by clicking on the icon shown below:



When the setup is completely loaded in your MD3 Series a message will be shown in your monitor

- 15- Send the configuration file to your MD3 Series by clicking on **Device** menu → **Send Configuration**.
All the configuration files are stored in CONFIG folder into the MD3_UPDATE_PACK: you must choice the properly file for your motorbike.



When the configuration is completely loaded in your MD3 Series a message will be shown in your monitor



16- Now you have finished the update procedure.